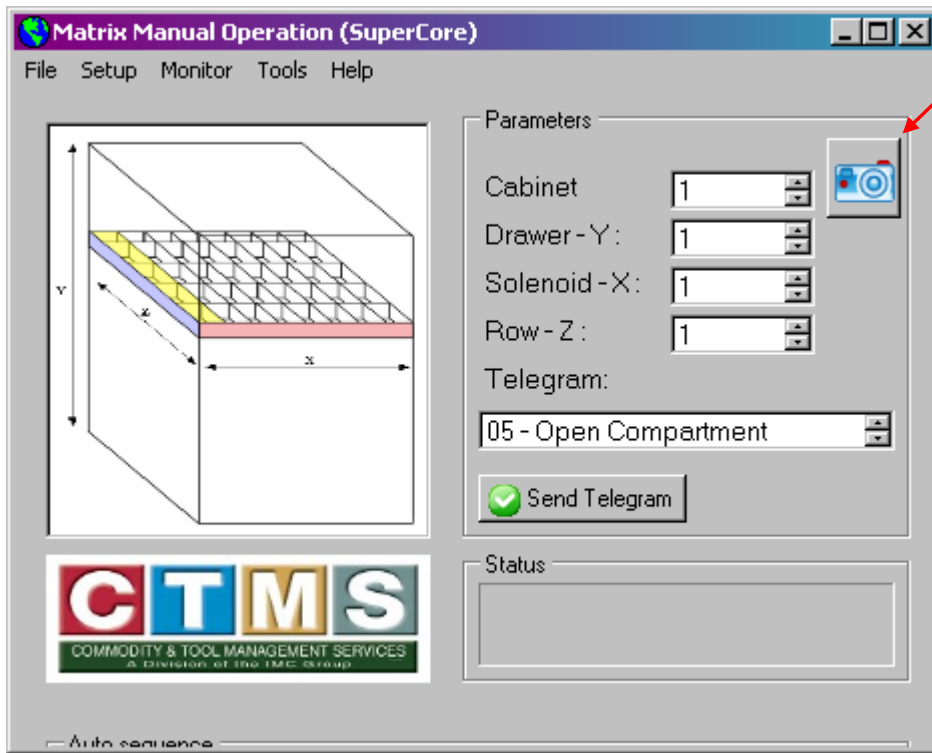


Using CIM Tools

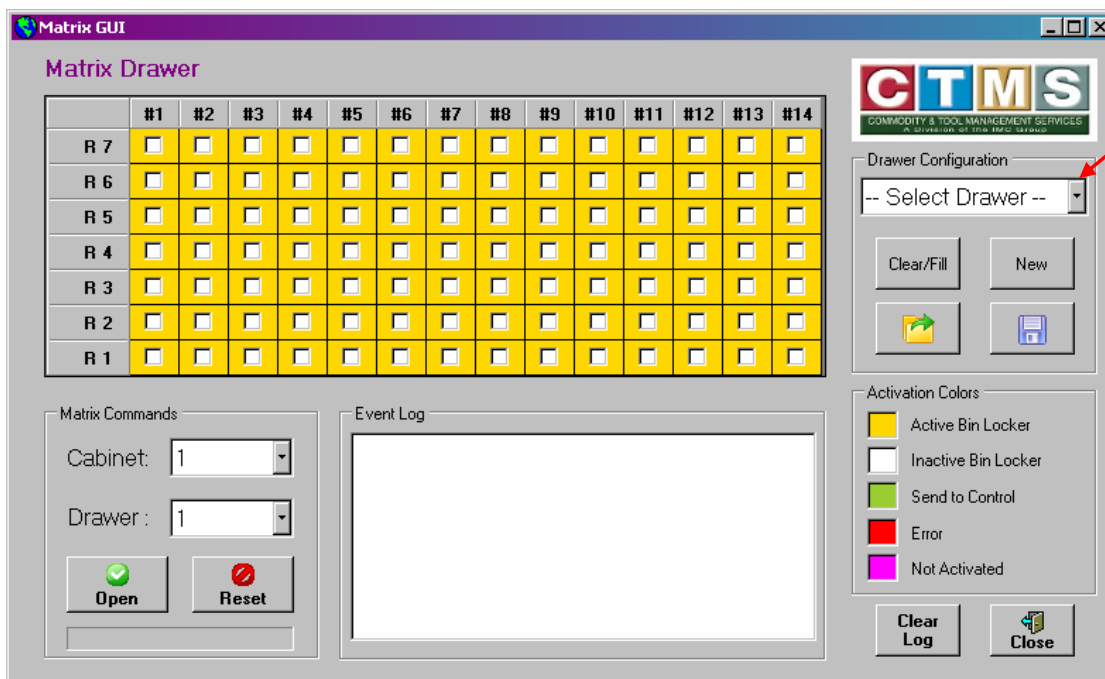
CIM tools is a diagnostic program used to check the Matrix to make sure that the computer is communicating with the drawers and triggering all of the solenoids that open the bins.

Go to Start>Programs>IMC CIM>Matrix Tools>Matrix CIM Tools. The program will open. Click the camera icon in the upper right.

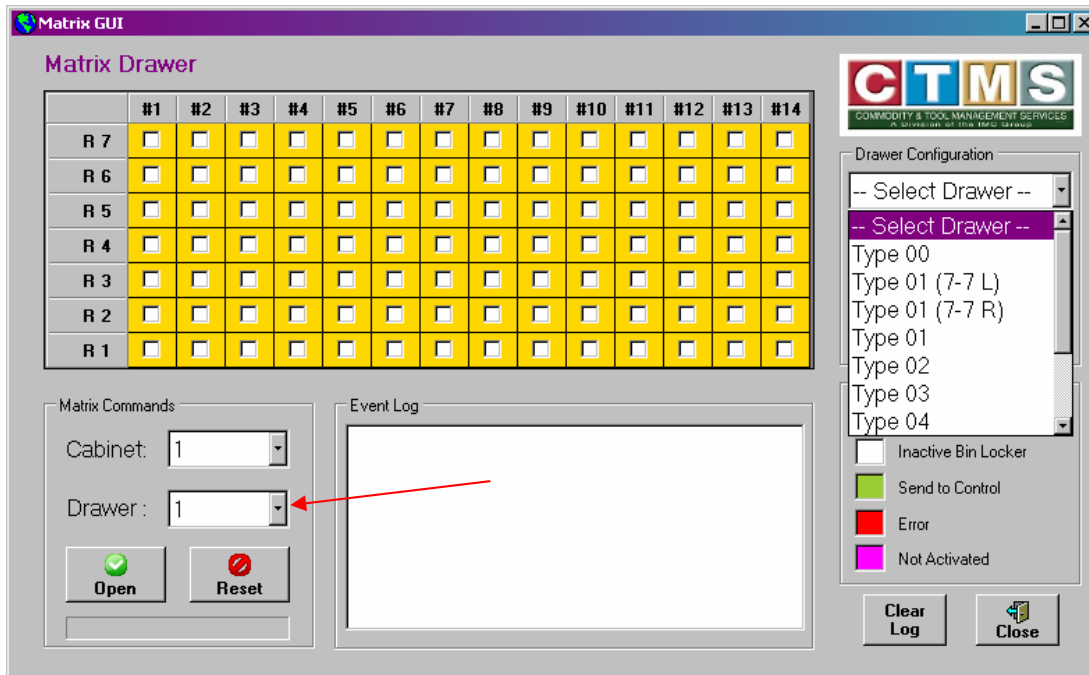


The following screen will open.

Click on the drop down for Select Drawer and choose the style of drawer you will be trying to open. See below for drawer configurations.



In Matrix Commands the Drawer number is actually the controller board that is connected to the drawer, not the drawer itself. Choose the one for the drawer and bins you are trying to open. Click the Open button. When the light turns from red to white open the drawer. The bins should pop open. If none of the bins are open then a controller board may possibly be bad or the COM port cable is not connected or configured properly.



Depending on the type of cabinet you have the drawer configuration will vary.

Standard Master

Drawer 1 = 1 Type 01
 Drawer 2 = 3 Type 01
 Drawer 3 = 4 Type 01
 Drawer 4 = 5 Type 02
 Drawer 5 = 6 Type 03
 Drawer 6 = 7 Type 04
 Drawer 7 = 8 Type 03
 Drawer 8 = 9 Type 06

Production Master

Drawer 1 = 1 Type 01
 Drawer 2 = 3 Type 01
 Drawer 3 = 5 Type 01
 Drawer 4 = 6 Type 02
 Drawer 5 = 7 Type 03
 Drawer 6 = 8 Type 03
 Drawer 7 = 9 Type 04

Job Shop Master

Drawer 1 = 1 Type 01
 Drawer 2 = 2 Type 01
 Drawer 3 = 4 Type 02
 Drawer 4 = 5 Type 03
 Drawer 5 = 6 Type 04
 Drawer 6 = 7 Type 05
 Drawer 7 = 8 Type 03
 Drawer 8 = 9 Type 06

Insert Master

Drawer 1 = 1 Type 01
Drawer 2 = 2 Type 02
Drawer 3 = 3 Type 01
Drawer 4 = 5 Type 01
Drawer 5 = 7 Type 01
Drawer 6 = 8 Type 03
Drawer 7 = 9 Type 03